

Minoh City Hazard Zone Map

一般財団法人 自治体国際化協会
CLAIR

About this map

EMERGENCY NUMBER TO CALL IN THE CASE OF A DISASTER

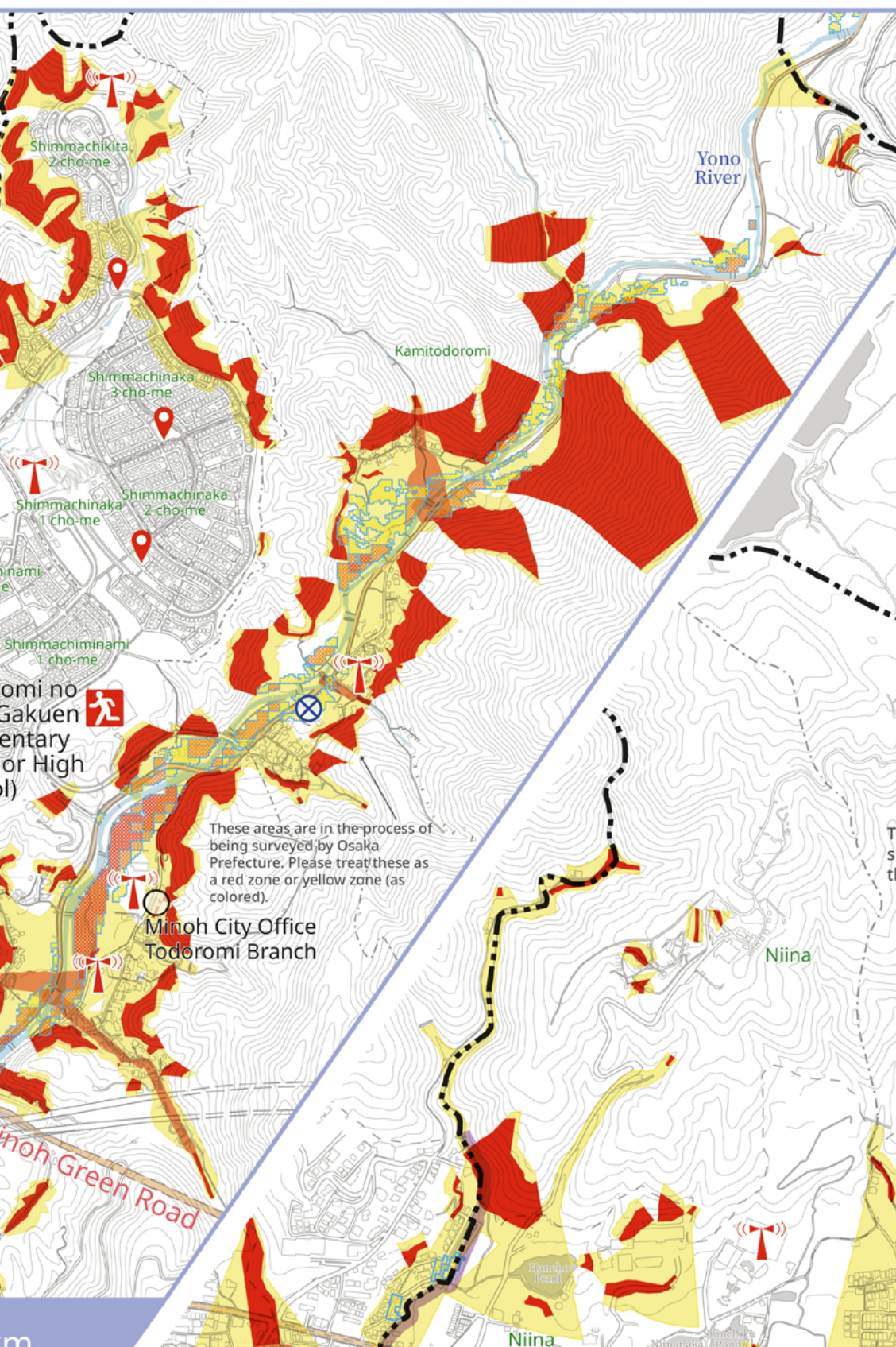
Minoh City Disaster Response Headquarters (direct line)
072-724-5000

For those who are deaf or hard of hearing (or have a speech impediment)
FAX 072-727-3539 (Health and Welfare Department)

- City gas leak (Osaka Gas) 0120-5-19424
- Propane gas leak (Emergency Center) 06-6261-0099
- Fallen power lines (Kansai Electric Power Company) 0800-777-3081

If the phone call won't connect, or no one picks up:
Go directly to an evacuation center (elementary school*) close to you. (You can contact the Disaster Response Headquarters on handheld radios, etc.)
*Along with your family confirm a route to an evacuation center. Then actually try walking the route in order to make sure that it is safe.

Todoromi & Shimmachi Area



Evacuation Centers

If your home is unsafe please take refuge in the evacuation center (elementary school*) of the school district you live in. (*Kansai High School District of Kayano Elementary School)

Evacuation Centers	TEL
1 Todoromi no Mori Gakuen	072-739-0378
2 Minoh Elementary School	072-721-2350
3 Nishi Elementary School	072-721-7975
4 Minami Elementary School	072-721-2522
5 Seinan Elementary School	072-722-7782
6 Maple Hall (Kita Elementary School District)	072-721-4094
7 Naka Elementary School	072-721-0601
8 Dai Ni Junior High School (Kayanokita Elementary School District)	072-721-7381
9 Kayano Elementary School	072-721-3254
10 Kayanohigashi Elementary School	072-729-3608
11 Higashi Elementary School	072-729-2134
12 Toyokawakita Elementary School	072-729-6564
13 Toyokawaminami Elementary School	072-728-0231
14 Saito no Oka Gakuen	072-726-9901

Typhoons & sudden heavy rain

Which is safer for your home? Is it safer to go to an evacuation center? It is safer to stay home?

Hazard Type	Evacuation Actions
Landslides Your evacuation actions	<p>Red Zone Evacuate to an evacuation center Go to an evacuation center</p> <p>High risk area Stay safe at home (on the 2nd floor or above) Do not go outside, or into a room facing away from mountains, cliffs and rivers on the 2nd floor or above.</p> <p>Yellow Zone Stay safe at home Do not go outside, go into a room facing away from mountains, cliffs and rivers on the 2nd floor or above.</p>
Floods Floods Example Hazard Zone	<p>Danger level 3 Evacuate to an evacuation center Go to an evacuation center</p> <p>Danger level 2 Stay safe at home (on the 2nd floor or above) Do not go outside, or into a room facing away from mountains, cliffs and rivers on the 2nd floor or above.</p> <p>Danger level 1 Stay safe at home Do not go outside, go into a room facing away from mountains, cliffs and rivers on the 2nd floor or above.</p>

What to do when the City makes evacuation announcements

- If an evacuation preparation (evacuation of elderly people and others) is announced, households in the areas asked to evacuate should:
 - Households with elderly people, people with disabilities and small children etc. should immediately begin evacuating to an evacuation center.
 - Those who can evacuate in the standard manner should begin to prepare to evacuate. (Start when an evacuation advisory is announced.)

Support for those who require additional aid in a disaster (Safety confirmation register of people who need additional aid)

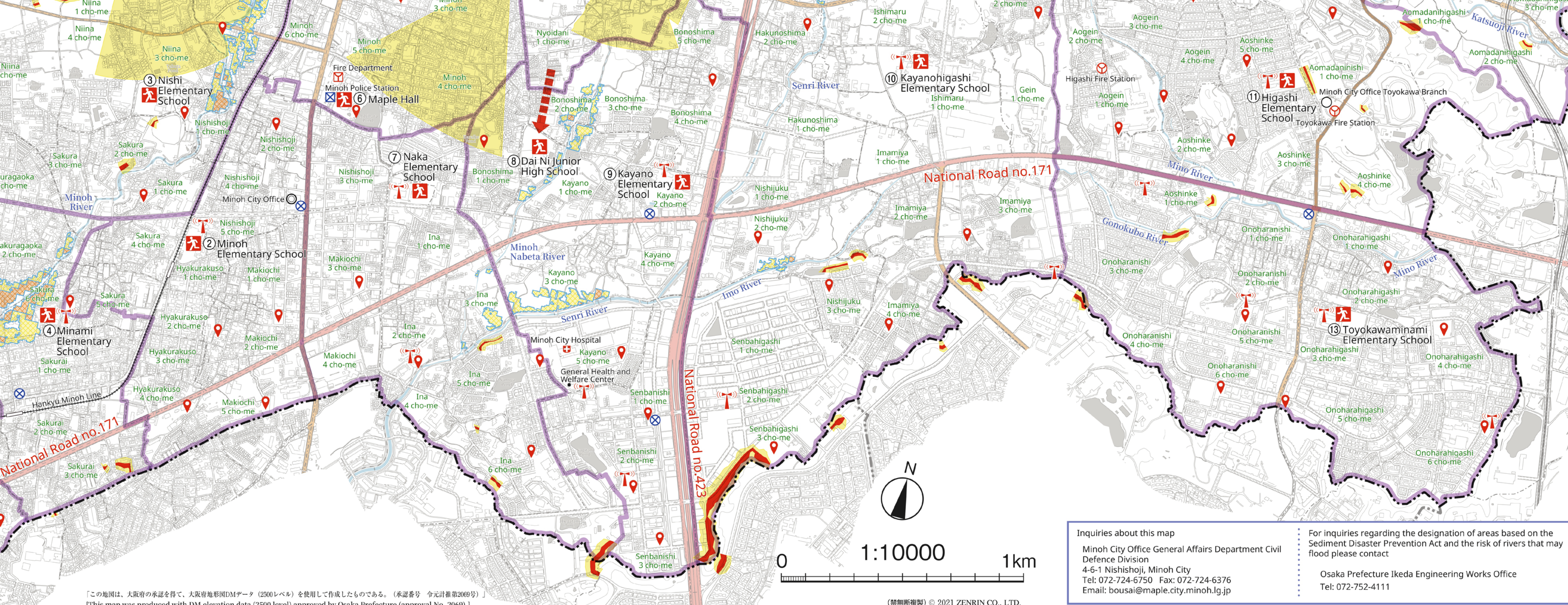
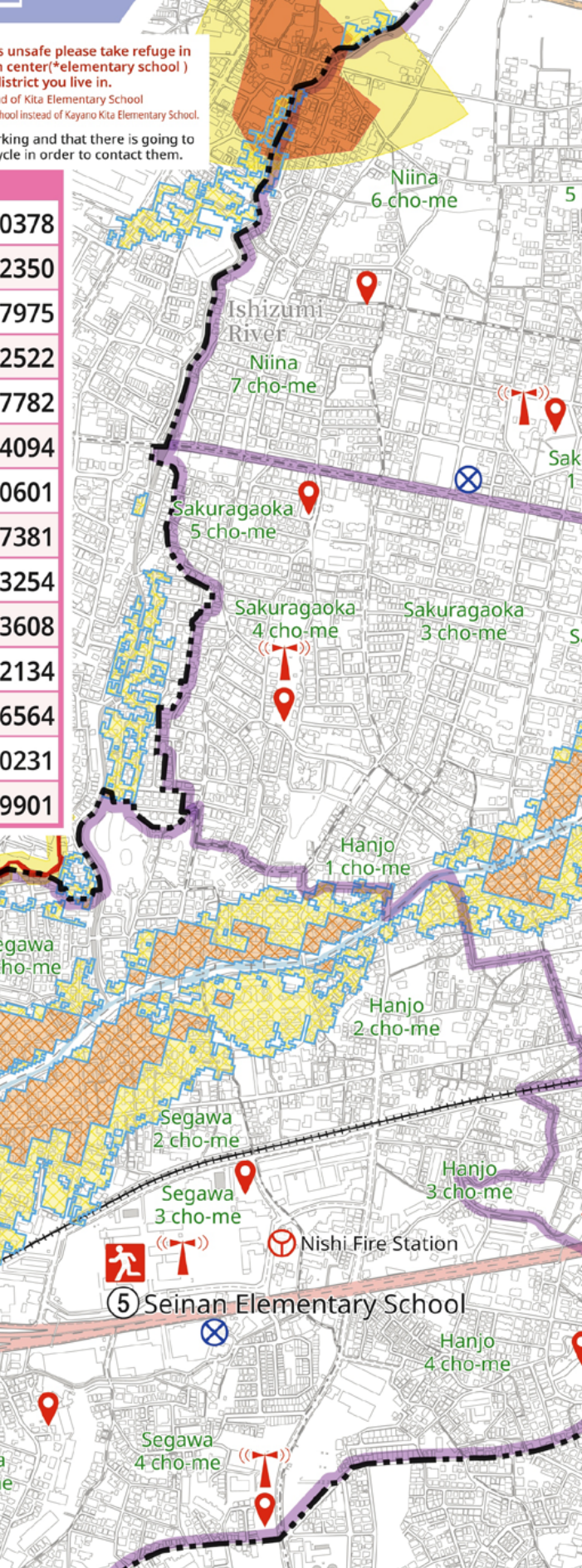
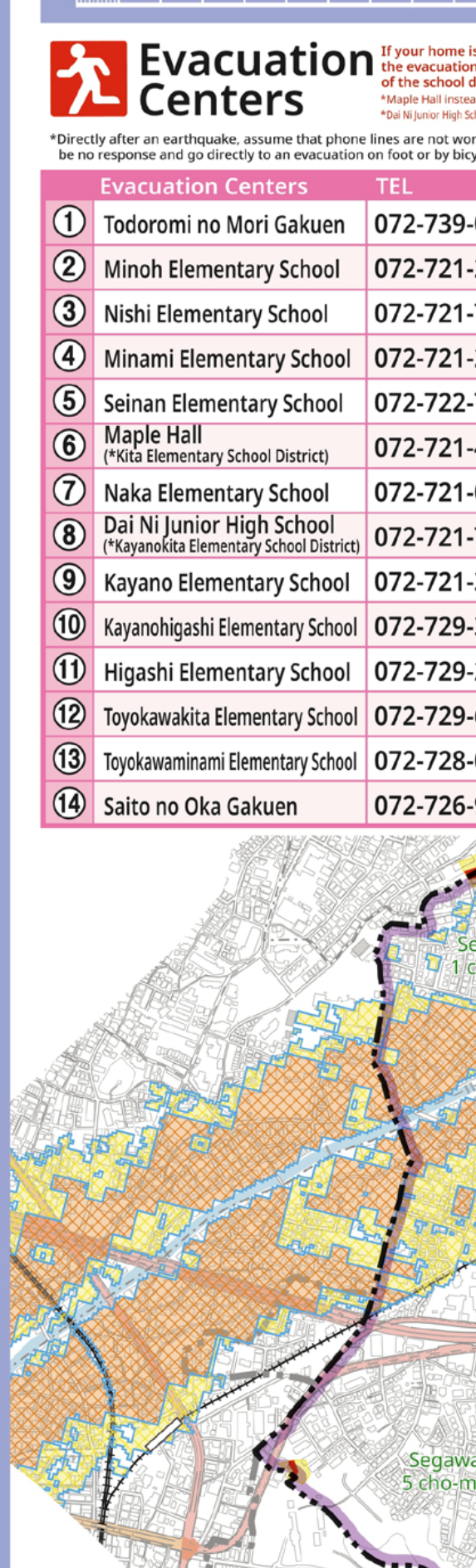
The City keeps a register of elderly people, those with serious disabilities, those who cannot move swiftly to protect themselves and those who may have trouble calling for help if they are in a situation where they need it etc. This register is kept at evacuation centers and is sealed for safekeeping. In the event of a large earthquake the register will be taken out of sealed storage and used in order to quickly confirm people's safety.

Those whose names are recorded

- Those who are age 75 or over and live alone, or households in which all of the members are age 75 or over
- Those who require a level 3-5 on the nursing care scale
- Those with a Grade 1 or 2 Physical Disability Handbook or a Special Education Handbook (A)
- Those who have submitted a notice of pregnancy within the past year (For those who moved to Minoh after submitting a notice of pregnancy to a different city/town/district, it is one year from the date they moved to Minoh.)
- Children under the age of 2.

*Those who are in the target group for this register can request to be taken off it.
*Please check the City website for information about how to request to be taken off the register.

Key



Inquiries about this map
Minoh City Office General Affairs Department Civil Defence Division
4-6-1 Nishishoji, Minoh City
Tel: 072-724-6750 Fax: 072-724-6376
Email: bousai@maple.city.minoh.lg.jp

For inquiries regarding the designation of areas based on the Sediment Disaster Prevention Act and the risk of rivers that may flood please contact
Osaka Prefecture Ikeda Engineering Works Office
Tel: 072-752-4111